



### STEEL CONDUIT



#### STEEL CONDUIT

**Material** : Steel  
**Finish** : Hot Dip Galvanised / Pre Galvanised  
**Standard** : Class 4: As per BSEN 61386 BS EN 50086-2-1: 1996 BS 4568 Part 1: 1970

Supplied in a standard length of 3.75 meters with threaded both ends where one end fitted with coupling and the other protected by plastic end cap

Note: Pre Galvanised conduits does not meet the requirements of BS 4568.

#### Cable Capacities of Conduit

The following tables give guidance on the calculation of the number of single-core PVC insulated cables which can be located in various sizes of conduit. The Table deal with two particular cases.

1. Single-core PVC insulated cables in straight runs not exceeding 3 meters in length.
2. Single-core PVC insulated cables in straight runs exceeding 3 meters in length or in runs of any length with bends or sets.

#### Straight Runs Not Exceeding 3 Meters in Length

For each types of cable being used obtains the cable factor from Table 1. Sum all the cable factors and compare with the conduit factors given in Table 2. The conduit sizes which will accommodate the cables are those with a conduit factor equal to or greater than the sum of the cable factors

#### Straight Runs Not Exceeding 3 Meters in Length or Runs of Any Length Incorporating Bends or Sets

For each types of cable being used obtains the cable factors from Table 3. Sum all the cable factors and compare with the conduit factor given in Table 4 for the relevant length of run and the number of bends and sets in than run.

#### Spacing of Supports for conduits

The following table gives guidance on the spacing of supports for conduit.

Nominal Size of Conduit mm	Maximum distance between supports	
	Horizontal runs m	Horizontal runs m
16mm	0.75	1.0
17mm-25mm	1.75	2.0
26mm-40mm	2.0	2.25
Over 40mm	2.25	2.5

These tables are based on the 16th edition of the I.E.E Wiring Regulations Appendix 11.

These Tables are for guidance only and account needs to be taken of future wiring needs

Nominal Size(mm)	Dimensions (mm)				
	Outside Diameter		Thickness	Length of Thread	
	Min	Max		Min	Max
20	19.7	20.0	1.6 ± 0.15	13.0	15.0
25	24.6	25.0	1.6 ± 0.15	16.0	18.0
32	31.6	32.0	1.6 ± 0.15	18.0	20.0

Bigger sizes are also available

Type Conductor	Conductor cross section area mm <sup>2</sup>	Factor
Solid	1	22
	1.5	27
	2.5	39
Standard	1.5	31
	2.5	43
	4	58
	6	88
	10	146

These Tables are based on the 16th edition of the I.E.E. Wiring Regulationa Appendix 12.

Conduit Dia (mm)	Factor
16	290
20	460
25	800
32	1400

Table 2 Cable factors for short straight runs

Table 1 Cable factors for short straight runs

Type Conductor	Conductor cross section area mm <sup>2</sup>	Factor
Solid or Standard	1	16
	1.5	22
	2.5	30
Standard	4	43
	6	58
	10	105

Table 3 Cable factors for long straight runs or runs incorporating bends

Length of run meters	Conduit Dia Meter, mm																															
	16				20				25				32																			
	Straight				One bend				Two bends				Three bends				Four bends															
1	Covered by Table 1 and 2																															
1.5																	188	303	543	947	177	286	514	900	158	256	463	818	130	213	388	629
2																	182	294	528	923	167	270	487	857	143	233	422	750	111	182	333	600
2.5																	177	286	514	900	158	256	463	818	130	213	388	692	97	159	292	592
3																	171	278	500	878	150	244	442	783	120	196	358	643	86	141	260	472
3.5	167	270	487	857	143	233	422	750	111	182	333	600																				
4	179	290	521	911	162	263	475	837	136	222	404	720	103	169	311	563																
4.5	177	286	514	900	158	256	463	818	130	213	388	692	97	159	292	529																
5	174	282	507	889	154	250	452	800	125	204	373	667	91	149	275	500																
6	171	278	500	878	150	244	442	783	120	196	358	643	86	141	260	474																
7	167	270	487	857	143	233	422	750	111	182	333	600																				
8	162	263	475	873	136	222	404	720	103	169	311	563																				
9	158	256	463	818	130	213	388	692	97	159	292	529																				
10	154	250	452	800	125	204	373	667	91	149	275	500																				
10	150	244	442	783	120	196	358	643	86	141	260	474																				



### Circular Box

As per BS 50086, BS 31- Where Applicable

Supplied without cover & screw unless ordered.

#### TERMINAL (ONE WAY)

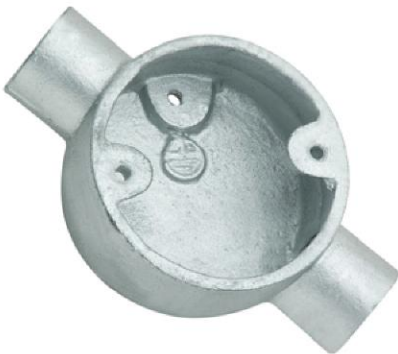


Material : Cast Iron, Malleable Iron  
 Finish : Galvanised, Black Enamel  
 Dimension Internal : 60mm  $\phi$  x 27.3mm deep (3/4", 20mm)  
 60mm  $\phi$  x 30.6mm deep (1", 25mm)  
 75mm  $\phi$  x 38mm deep (1 1/4", 32mm)  
 Fixing Centre : 50.8mm, Tapped 2 BA (Imperial) M4(Metric) for 20 & 25mm  
 71.5mm, Tapped 2 BA (Imperial) M4(Metric) for 32mm  
 with tapped hole in base for earthing screw

Size (mm)	Size (Inc.)	Ref. No.
20mm	3/4"	HE100-20
25mm	1"	HE100-25
32mm	1 1/4"	HE100-32

- Bigger Size available on request

#### THROUGH (TWO WAY)



Material : Cast Iron, Malleable Iron  
 Finish : Galvanised, Black Enamel  
 Dimension Internal : 60mm  $\phi$  x 27.3mm deep (3/4", 20mm)  
 60mm  $\phi$  x 30.6mm deep (1", 25mm)  
 75mm  $\phi$  x 38mm deep (1 1/4", 32mm)  
 Fixing Centre : 50.8mm, Tapped 2 BA (Imperial) M4(Metric) for 20 & 25mm  
 71.5mm, Tapped 2 BA (Imperial) M4(Metric) for 32mm  
 with tapped hole in base for earthing screw

Size (mm)	Size (Inc.)	Ref. No.
20mm	3/4"	HE110-20
25mm	1"	HE110-25
32mm	1 1/4"	HE110-32

- Bigger Size available on request

#### ANGLE



Material : Cast Iron, Malleable Iron  
 Finish : Galvanised, Black Enamel  
 Dimension Internal : 60mm  $\phi$  x 27.3mm deep (3/4", 20mm)  
 60mm  $\phi$  x 30.6mm deep (1", 25mm)  
 75mm  $\phi$  x 38mm deep (1 1/4", 32mm)  
 Fixing Centre : 50.8mm, Tapped 2 BA (Imperial) M4(Metric) for 20 & 25mm  
 71.5mm, Tapped 2 BA (Imperial) M4(Metric) for 32mm  
 with tapped hole in base for earthing screw

Size (mm)	Size (Inc.)	Ref. No.
20mm	3/4"	HE120-20
25mm	1"	HE120-25
32mm	1 1/4"	HE120-32

- Bigger Size available on request

#### TEE (THREE WAY)



Material : Cast Iron, Malleable Iron  
 Finish : Galvanised, Black Enamel  
 Dimension Internal : 60mm  $\phi$  x 27.3mm deep (3/4", 20mm)  
 60mm  $\phi$  x 30.6mm deep (1", 25mm)  
 75mm  $\phi$  x 38mm deep (1 1/4", 32mm)  
 Fixing Centre : 50.8mm, Tapped 2 BA (Imperial) M4(Metric) for 20 & 25mm  
 71.5mm, Tapped 2 BA (Imperial) M4(Metric) for 32mm  
 with tapped hole in base for earthing screw

Size (mm)	Size (Inc.)	Ref. No.
20mm	3/4"	HE130-20
25mm	1"	HE130-25
32mm	1 1/4"	HE130-32

- Bigger Size available on request

### Circular Box

As per BS 50086, BS 31- Where Applicable

Supplied without cover & screw unless ordered.

#### INTERSECTION (FOUR WAY)



Material : Cast Iron, Malleable Iron  
 Finish : Galvanised, Black Enamel  
 Dimension Internal : 60mm  $\phi$  x 27.3mm deep (3/4", 20mm)  
 60mm  $\phi$  x 30.6mm deep (1", 25mm)  
 75mm  $\phi$  x 38mm deep (1 1/4", 32mm)  
 Fixing Centre : 50.8mm, Tapped 2 BA (Imperial) M4(Metric) for 20 & 25mm  
 71.5mm, Tapped 2 BA (Imperial) M4(Metric) for 32mm  
 with tapped hole in base for earthing screw

Size (mm)	Size (Inc.)	Ref. No.
20mm	3/4"	HE140-20
25mm	1"	HE140-25
32mm	1 1/4"	HE140-32

- Bigger Size available on request

#### BRANCH (TWO WAY) 'U'



Material : Cast Iron, Malleable Iron  
 Finish : Galvanised, Black Enamel  
 Dimension Internal : 60mm  $\phi$  x 27.3mm deep (3/4", 20mm)  
 60mm  $\phi$  x 30.6mm deep (1", 25mm)  
 75mm  $\phi$  x 38mm deep (1 1/4", 32mm)  
 Fixing Centre : 50.8mm, Tapped 2 BA (Imperial) M4(Metric) for 20 & 25mm  
 71.5mm, Tapped 2 BA (Imperial) M4(Metric) for 32mm  
 with tapped hole in base for earthing screw

Size (mm)	Size (Inc.)	Ref. No.
20mm	3/4"	HE150-20
25mm	1"	HE150-25
32mm	1 1/4"	HE150-32

- Bigger Size available on request

#### BRANCH (TWO WAY) 'Y'



Material : Cast Iron, Malleable Iron  
 Finish : Galvanised, Black Enamel  
 Dimension Internal : 60mm  $\phi$  x 27.3mm deep (3/4", 20mm)  
 60mm  $\phi$  x 30.6mm deep (1", 25mm)  
 75mm  $\phi$  x 38mm deep (1 1/4", 32mm)  
 Fixing Centre : 50.8mm, Tapped 2 BA (Imperial) M4(Metric) for 20 & 25mm  
 71.5mm, Tapped 2 BA (Imperial) M4(Metric) for 32mm  
 with tapped hole in base for earthing screw

Size (mm)	Size (Inc.)	Ref. No.
20mm	3/4"	HE160-20
25mm	1"	HE160-25
32mm	1 1/4"	HE160-32

- Bigger Size available on request

#### TWIN THROUGH 'H'



Material : Cast Iron, Malleable Iron  
 Finish : Galvanised, Black Enamel  
 Dimension Internal : 60mm  $\phi$  x 27.3mm deep (3/4", 20mm)  
 60mm  $\phi$  x 30.6mm deep (1", 25mm)  
 75mm  $\phi$  x 38mm deep (1 1/4", 32mm)  
 Fixing Centre : 50.8mm, Tapped 2 BA (Imperial) M4(Metric) for 20 & 25mm  
 71.5mm, Tapped 2 BA (Imperial) M4(Metric) for 32mm  
 with tapped hole in base for earthing screw

Size (mm)	Size (Inc.)	Ref. No.
20mm	3/4"	HE170-20
25mm	1"	HE170-25
32mm	1 1/4"	HE170-32

- Bigger Size available on request



As per BS 50086, BS 31- Where Applicable

Supplied without cover & screw unless ordered.

### BACK OUTLET



Material : Cast Iron, Malleable Iron  
 Finish : Galvanised, Black Enamel  
 Dimension Internal : 60mm  $\phi$  x 27.3mm deep (3/4", 20mm)  
 60mm  $\phi$  x 30.6mm deep (1", 25mm)  
 75mm  $\phi$  x 38mm deep (1 1/4", 32mm)  
 Fixing Centre : 50.8mm, Tapped 2 BA (Imperial) M4(Metric) for 20 & 25mm  
 71.5mm, Tapped 2 BA (Imperial) M4(Metric) for 32mm  
 with tapped hole in base for earthing screw

Size (mm)	Size (Inc.)	Ref. No.
20mm	3/4"	HE180-20
25mm	1"	HE180-25
32mm	1 1/4"	HE180-32

- Bigger Size available on request

### TERMINAL (ONE WAY) BACK OUTLET



Material : Cast Iron, Malleable Iron  
 Finish : Galvanised, Black Enamel  
 Dimension Internal : 60mm  $\phi$  x 27.3mm deep (3/4", 20mm)  
 60mm  $\phi$  x 30.6mm deep (1", 25mm)  
 75mm  $\phi$  x 38mm deep (1 1/4", 32mm)  
 Fixing Centre : 50.8mm, Tapped 2 BA (Imperial) M4(Metric) for 20 & 25mm  
 71.5mm, Tapped 2 BA (Imperial) M4(Metric) for 32mm  
 with tapped hole in base for earthing screw

Size (mm)	Size (Inc.)	Ref. No.
20mm	3/4"	HE190-20
25mm	1"	HE190-25
32mm	1 1/4"	HE190-32

- Bigger Size available on request

### THROUGH (TWO WAY) BACK OUTLET



Material : Cast Iron, Malleable Iron  
 Finish : Galvanised, Black Enamel  
 Dimension Internal : 60mm  $\phi$  x 27.3mm deep (3/4", 20mm)  
 60mm  $\phi$  x 30.6mm deep (1", 25mm)  
 75mm  $\phi$  x 38mm deep (1 1/4", 32mm)  
 Fixing Centre : 50.8mm, Tapped 2 BA (Imperial) M4(Metric) for 20 & 25mm  
 71.5mm, Tapped 2 BA (Imperial) M4(Metric) for 32mm  
 with tapped hole in base for earthing screw

Size (mm)	Size (Inc.)	Ref. No.
20mm	3/4"	HE200-20
25mm	1"	HE200-25
32mm	1 1/4"	HE200-32

- Bigger Size available on request

### ANGLE (TWO WAY) BACK OUTLET



Material : Cast Iron, Malleable Iron  
 Finish : Galvanised, Black Enamel  
 Dimension Internal : 60mm  $\phi$  x 27.3mm deep (3/4", 20mm)  
 60mm  $\phi$  x 30.6mm deep (1", 25mm)  
 75mm  $\phi$  x 38mm deep (1 1/4", 32mm)  
 Fixing Centre : 50.8mm, Tapped 2 BA (Imperial) M4(Metric) for 20 & 25mm  
 71.5mm, Tapped 2 BA (Imperial) M4(Metric) for 32mm  
 with tapped hole in base for earthing screw

Size (mm)	Size (Inc.)	Ref. No.
20mm	3/4"	HE210-20
25mm	1"	HE210-25
32mm	1 1/4"	HE210-32

- Bigger Size available on request

As per BS 50086, BS 31- Where Applicable

Supplied without cover & screw unless ordered.

### TEE (THREE WAY) BACK OUTLET



Material : Cast Iron, Malleable Iron  
 Finish : Galvanised, Black Enamel  
 Dimension Internal : 60mm  $\phi$  x 27.3mm deep (3/4", 20mm)  
 60mm  $\phi$  x 30.6mm deep (1", 25mm)  
 75mm  $\phi$  x 38mm deep (1 1/4", 32mm)  
 Fixing Centre : 50.8mm, Tapped 2 BA (Imperial) M4(Metric) for 20 & 25mm  
 71.5mm, Tapped 2 BA (Imperial) M4(Metric) for 32mm  
 with tapped hole in base for earthing screw

Size (mm)	Size (Inc.)	Ref. No.
20mm	3/4"	HE220-20
25mm	1"	HE220-25
32mm	1 1/4"	HE220-32

- Bigger Size available on request

### INTERSECTION (FOUR WAY) BACK OUTLET



Material : Cast Iron, Malleable Iron  
 Finish : Galvanised, Black Enamel  
 Dimension Internal : 60mm  $\phi$  x 27.3mm deep (3/4", 20mm)  
 60mm  $\phi$  x 30.6mm deep (1", 25mm)  
 75mm  $\phi$  x 38mm deep (1 1/4", 32mm)  
 Fixing Centre : 50.8mm, Tapped 2 BA (Imperial) M4(Metric) for 20 & 25mm  
 71.5mm, Tapped 2 BA (Imperial) M4(Metric) for 32mm  
 with tapped hole in base for earthing screw

Size (mm)	Size (Inc.)	Ref. No.
20mm	3/4"	HE230-20
25mm	1"	HE230-25
32mm	1 1/4"	HE230-32

- Bigger Size available on request

### LOOPING BOX



Type	Size & Code	
	20mm	25mm
1 Hole	HE240-20	HE240-25
2 Hole	HE241-20	-
3 Hole	HE242-20	-
4 Hole	HE243-20	-

Material : Mild Steel, Cast Iron  
 Finish : Galvanised, Electro Galvanised

- Knock out also available for 20mm in Steel
- Bigger Size available on request

### EXTENSION RING



Size (mm)	Size (Inc.)	Ref. No.
12mm	1/2"	HE250-12
15mm	5/8"	HE250-15
20mm	3/4"	HE250-20
25mm	1"	HE250-25
32mm	1 1/4"	HE250-32
38mm	1 1/2"	HE250-38
50mm	2"	HE250-50

Material : Cast Iron, Malleable Iron, Mild Steel

### EXTENSION BOX



Size(mm)	Ref. No.
3x3x16	HE1011
3x3x25	HE1012

### EXTENSION BOX



Size(mm)	Ref. No.
3x6x16	HE1020
3x6x25	HE1021

As per BS 50086, BS 31- Where Applicable

### NORMAL BEND



Material : Mild Steel  
 Finish : Galvanised, Black Enamel,  
 Electro Galvanised

Size (mm)	Size (Inc.)	Ref. No.
20mm	3/4"	HE510-20
25mm	1"	HE510-25
32mm	1 1/4"	HE510-32
38mm	1 1/2"	HE510-38
50mm	2"	HE510-50

### INSPECTION TEE



Material : Cast Iron, Malleable Iron  
 Finish : Galvanised, Black Enamel

Size (mm)	Size (Inc.)	Ref. No.
20mm	3/4"	HE520-20
25mm	1"	HE520-25
32mm	1 1/4"	HE520-32
38mm	1 1/2"	HE520-38
50mm	2"	HE520-50

### INSPECTION BEND



Material : Cast Iron, Malleable Iron  
 Finish : Galvanised, Black Enamel

Size (mm)	Size (Inc.)	Ref. No.
20mm	3/4"	HE530-20
25mm	1"	HE530-25
32mm	1 1/4"	HE530-32
38mm	1 1/2"	HE530-38
50mm	2"	HE530-50

### INSPECTION ELBOW



Material : Cast Iron, Malleable Iron  
 Finish : Galvanised, Black Enamel

Size (mm)	Size (Inc.)	Ref. No.
20mm	3/4"	HE540-20
25mm	1"	HE540-25
32mm	1 1/4"	HE540-32
38mm	1 1/2"	HE540-38
50mm	2"	HE540-50



As per BS 50086, BS 31- Where Applicable

### DISTANCE SADDLE



Material : Base -Cast Iron, Malleable Iron  
 : Strap - Galvanised Steel  
 Finish : Galvanised, Black Enamel

Size (mm)	Size (Inc.)	Ref. No.
20mm	3/4"	HE300-20
25mm	1"	HE300-25
32mm	1 1/4"	HE300-32
38mm	1 1/2"	HE300-38
50mm	2"	HE300-50

### HALF SADDLE



Material : Mild Steel  
 Finish : Electro Galvanised

Size (mm)	Size (Inc.)	Ref. No.
20mm	3/4"	HE310-20
25mm	1"	HE310-25
32mm	1 1/4"	HE310-32
38mm	1 1/2"	HE310-38
50mm	2"	HE310-50

### PLAIN SADDLE



Material : Mild Steel  
 Finish : Electro Galvanised, Black Enamel

Size (mm)	Size (Inc.)	Ref. No.
20mm	3/4"	HE320-20
25mm	1"	HE320-25
32mm	1 1/4"	HE320-32
38mm	1 1/2"	HE320-38
50mm	2"	HE320-50

### BAR SADDLE



Material : Mild Steel  
 Finish : Galvanised, Black Enamel, Electro Galvanised

Size (mm)	Size (Inc.)	Ref. No.
20mm	3/4"	HE330-20
25mm	1"	HE330-25
32mm	1 1/4"	HE330-32
38mm	1 1/2"	HE330-38
50mm	2"	HE330-50



As per BS 50086, BS 31- Where Applicable

### COUPLER



Material : Mild Steel  
 Finish : Galvanised, Black Enamel,  
 Electro Galvanised

Size (mm)	Size (Inc.)	Ref. No.
20mm	3/4"	HE340-20
25mm	1"	HE340-25
32mm	1 1/4"	HE340-32
38mm	1 1/2"	HE340-38
50mm	2"	HE340-50

### NIPPLE



Material : Mild Steel, Brass  
 Finish : Zinc Plated, Self

Size (mm)	Size (Inc.)	Cat No.
20mm	3/4"	HE350-20
25mm	1"	HE350-25

### EARTHING COUPLER



Material : Mild Steel  
 Finish : Galvanised, Black Enamel

Size (mm)	Size (Inc.)	Ref. No.
20mm	3/4"	HE360-20
25mm	1"	HE360-25
32mm	1 1/4"	HE360-32

### EXTENSION COUPLER



Material : Mild Steel  
 Finish : Galvanised

Size (mm)	Size (Inc.)	Ref. No.
20mm	3/4"	HE370-20
25mm	1"	HE370-25

### FLANGE COUPLER



Material : Mild Steel, Malleable Iron  
 Finish : Galvanised, Black Enamel  
 Note : Complete with Brass Bush & Lead Washer and Nylon Washer for bigger size

Size (mm)	Ref. No.
20mm	HE380-20
25mm	HE380-25
32mm	HE380-32
38mm	HE380-38
50mm	HE380-50

### IRON REDUCER



Material : Cast Iron, Mild Steel  
 Finish : Galvanised, Black Enamel,  
 Electro Galvanised

Size (mm)	Ref. No.
16mm x 20mm	HE400-16
16mm x 25mm	HE401-16
16mm x 32mm	HE402-16
16mm x 38mm	HE403-16
16mm x 50mm	HE404-16
20mm x 25mm	HE400-20
20mm x 32mm	HE405-20
20mm x 38mm	HE406-20
20mm x 50mm	HE407-20
25mm x 32mm	HE400-25
25mm x 38mm	HE408-25
25mm x 50mm	HE409-25
32mm x 38mm	HE400-32

As per BS 50086, BS 31- Where Applicable

### DOME COVER



Material : Mild Steel  
 Finish : Galvanised, Black Enamel  
 Electro Galvanised

Size (mm)	Size (Inc.)	Cat No.
20mm	3/4"	HE550-20
25mm	1"	HE550-25

### DOME COVER



Material : Cast Iron, Malleable Iron  
 Finish : Galvanised, Black Enamel,  
 Electro Galvanised

Size (mm)	Size (Inc.)	Cat No.
20mm	3/4"	HE560-20
25mm	1"	HE560-25

### HOOK PLATE/COVER



Code : HE570  
 Material : Mild Steel  
 Finish : Galvanised, Black Enamel,  
 Electro Galvanised

### BALL SOCKET & COVER



Material : Cast Iron, Malleable Iron, Aluminium  
 Finish : Galvanised, Electro Galvanised  
 Self (Aluminium)

Size (mm)	Size (Inc.)	Cat No.
20mm	3/4"	HE580-20
25mm	1"	HE580-25

### CEILING PLATE



Material : Mild Steel  
 Finish : Galvanised

Size (mm)	Size (Inc.)	Cat No.
20mm	3/4"	HE590-20
25mm	1"	HE590-25

As per BS 50086, BS 31- Where Applicable

### LOCK NUTS



Material : Mild Steel  
 Finish : Galvanised, Black Enamel,  
 Electro Galvanised  
 Type : Light & Heavy

Size (mm)	Size (Inc.)	Ref. No.
20mm	3/4"	HE600-20
25mm	1"	HE600-25
32mm	1 1/4"	HE600-32
38mm	1 1/2"	HE600-38
50mm	2"	HE600-50

### LOCKRINGS



Material : Mild Steel  
 Finish : Galvanised, Electro Galvanised

Size (mm)	Size (Inc.)	Ref. No.
20mm	3/4"	HE610-20
25mm	1"	HE610-25
32mm	1 1/4"	HE610-32
38mm	1 1/2"	HE610-38
50mm	2"	HE610-50

### HEXAGONAL STOPPING PLUG



Material : Cast Iron, Mild Steel  
 Finish : Galvanised, Black Enamel,  
 Electro Galvanised

Size (mm)	Size (Inc.)	Ref. No.
20mm	3/4"	HE630-20
25mm	1"	HE630-25
32mm	1 1/4"	HE630-32
40mm	1 1/2"	HE630-40
50mm	2"	HE630-50

### CRAMPET



Material : Mild Steel  
 Finish : Galvanised, Black Enamel,  
 Electro Galvanised

Size (mm)	Ref. No.
20mm	HE640-20
25mm	HE640-25

### TWISTED CRAMPET



Material : Mild Steel  
 Finish : Galvanised, Black Enamel,  
 Electro Galvanised

Size (mm)	Ref. No.
20mm	HE650-20
25mm	HE650-25



### SPRING NUT



**LONG SPRING NUT**

Thread Size	Ref. No.
6mm	HEL1070-6
8mm	HEL1070-8
10mm	HEL1070-10
12mm	HEL1070-12



**SHORT SPRING NUT**

Thread Size	Ref. No.
6mm	HES1071-6
8mm	HES1071-8
10mm	HES1071-10
12mm	HES1071-12



**PLAIN NUT**

Thread Size	Ref. No.
6mm	HEP1072-6
8mm	HEP1072-8
10mm	HEP1072-10
12mm	HEP1072-12

### VIBRATION BUSH



Material : Mild Steel with Rubber Bush  
 Size : Small & Big  
 Code : HE1090

### BEAM CLAMP



Material : Malleable & S.G.Iron  
 Finish : Galvanised  
 Thread Size : M8, M10, M12, M16  
 Code : HE2000  
 Note : 16mm is without thread

### TUBE CLIP



Material : Mild Steel  
 Finish : Chrome Polish

Size	Ref. No.
T4	HE2010-4
T5	HE2010-5
T8	HE2010-8

### INSERT CLIP STEEL



Material : Mild Steel  
 Finish : Galvanised

Size	Cat No.
3/4"	HE2020

### C CHANNEL

Material : Mild Steel  
 Finish : Hot Dip, Electro Galvanised  
 Type : Slotted & Plain  
 Thickness : 1.5, 2mm

Size (mm)	Ref. No.
41 x 41mm	HE140-20
41 x 21mm	HE140-25



### SPRING NUT



**LONG SPRING NUT**

Thread Size	Ref. No.
6mm	HEL1070-6
8mm	HEL1070-8
10mm	HEL1070-10
12mm	HEL1070-12



**SHORT SPRING NUT**

Thread Size	Ref. No.
6mm	HES1071-6
8mm	HES1071-8
10mm	HES1071-10
12mm	HES1071-12



**PLAIN NUT**

Thread Size	Ref. No.
6mm	HEP1072-6
8mm	HEP1072-8
10mm	HEP1072-10
12mm	HEP1072-12

### VIBRATION BUSH



Material : Mild Steel with Rubber Bush  
 Size : Small & Big  
 Code : HE1090

### BEAM CLAMP



Material : Malleable & S.G.Iron  
 Finish : Galvanised  
 Thread Size : M8, M10, M12, M16  
 Code : HE2000  
 Note : 16mm is without thread

### TUBE CLIP



Material : Mild Steel  
 Finish : Chrome Polish

Size	Ref. No.
T4	HE2010-4
T5	HE2010-5
T8	HE2010-8

### INSERT CLIP STEEL



Material : Mild Steel  
 Finish : Galvanised

Size	Cat No.
3/4"	HE2020

### C CHANNEL

Material : Mild Steel  
 Finish : Hot Dip, Electro Galvanised  
 Type : Slotted & Plain  
 Thickness : 1.5, 2mm

Size (mm)	Ref. No.
41 x 41mm	HE140-20
41 x 21mm	HE140-25



### HANGING CLAMP



Material : Mild Steel  
 Finish : Electro Galvanised

- Can be used for both horizontal and vertical installations.
- Rubber lining for suppression of sound and vibrations.
- Welded Nut M8/M10 with option of M10/M12

Size (Inc.)	Ref. No.
1/2"	HE1030-12
3/4"	HE1030-34
1"	HE1030-01
1 1/4"	HE1031-01
1 1/2"	HE1032-01
2"	HE1032-02
2 1/2"	HE1033-02
3"	HE1033-03
4"	HE1033-04
5"	HE1033-05
6"	HE1033-06

### NAIL CLAMP



Material : Mild Steel  
 Finish : Electro Galvanised

Size (Inc.)	Ref. No.
1/2"	HE1040-12
3/4"	HE1040-34
1"	HE1040-01
1 1/4"	HE1041-01
1 1/2"	HE1042-01
2"	HE1042-02
2 1/2"	HE1043-02
3"	HE1043-03
4"	HE1043-04
5"	HE1043-05
6"	HE1043-06

### STRUT/C-CHANNEL CLAMPS



Material : Mild Steel  
 Finish : Galvanised, Electro Galvanised, Black Enamel  
 Available with SS Bolt and Nuts if ordered

Size (Inc.)	Ref. No.
1/2"	HE1050-12
3/4"	HE1050-20
1"	HE1050-25
1 1/4"	HE1050-32
1 1/2"	HE1050-40
2"	HE1050-50
3"	HE1050-60
4"	HE1050-75
5"	HE1050-100
6"	HE1050-150

### SPRINKLER CLAMP



#### Construction Features

- One piece clip guarantees a high permissible load.
- Mounting without any tools.
- Locking device allows easy pre-mounting.
- Adjustable in height.

Size Inch	Rod Size	Size	Ref. No.
3/4"	10	1.5 x 20	HE1060-34
1	10	1.5 x 20	HE1060-01
1 1/4"	10	1.5 x 20	HE1061-01
1 1/2"	10	1.5 x 20	HE1062-01
2"	10	1.5 x 20	HE1062-02
2 1/2"	10	2 x 32	HE1063-02
3"	10	2 x 32	HE1063-03
3 1/2"	10	2 x 32	HE1064-03
4"	10	2.5 x 32	HE1064-04
5"	10	2.5 x 40	HE1064-05



As per BS 50086, BS 31- Where Applicable

### ALUMINIUM ADOPTOR



Material : Aluminium  
Finish : Self

Size (mm)	Size (Inc.)	Ref. No.
20mm x 20mm	3/4"x3/4"	HE790-20
25mm x 25mm	1"x1"	HE790-25
32mm x 32mm	1 1/4"x1 1/4"	HE790-32
38mm x 38mm	1 1/2"x1 1/2"	HE790-38
50mm x 50mm	2"x2"	HE790-50
16mm x 20mm	5/8"x3/4"	HE790-16
20mm x 25mm	3/4"x1"	HE791-20
25mm x 20mm	1"x3/4"	HE792-25

### BONDING NIPPLE



Material : Zinc  
Finish : Self

Size (mm)	Ref. No.
20mm	HE800-20
25mm	HE800-25

### ARMOURED GLAND



Material : Zinc  
Finish : Self

Size (mm)	Ref. No.
20mm	HE810-20
25mm	HE810-25

### MALE HOOK



Size (mm)	Ref. No.
20mm	HE8000
25mm	HE8001

Material : Malleable Iron, Zinc  
Finish : Galvanised, Black Enamel

### EARTHING CLIP



Material : Copper  
Finish : Self

Size (mm)	Ref. No.
20mm	HE8000
25mm	HE8001

### DIE SET



Description	Ref. No.
One complete 20mm & 25mm Die Set contains: 1 x Die for 20mm 1 x Die for 25mm 1 x Die guide for 20mm 1 x Die guide for 25mm	HE900
1 x Die stock per set with detachable handle One complete 32mm Die Set contains: 1 x Die for 32mm 1 x Die guide for 32mm	HE901
1 x Die stock per set with detachable handle One complete 40mm Die Set contains: 1 x Die for 40mm 1 x Die guide for 40mm	HE902
1 x Die stock per set with detachable handle One complete 50mm Die Set contains: 1 x Die for 50mm 1 x Die guide for 50mm	HE903

### G.I. CONDUIT BENDER



Our range of conduit Bending Machine are suitable for use with electrical conduit of all common sizes.

Size (mm)	Ref. No.
20 - 25	HE1080-25
20 - 25 - 32	HE1080-20

### SWITCH & SOCKET BOX



Material : GP Sheet  
Thickness : 0.9mm, 1mm  
Available with adjustable Lugs & Brass Terminal.  
Other thickness is available on request

Size (mm)	Ref. No.
70x70x16mm	HE1010-16
70x70x25mm	HE1010-25
70x70x35mm	HE1010-35
130x70x16mm	HE1011-16
130x70x25mm	HE1011-25
130x70x35mm	HE1011-35

### ADAPTABLE BOX



Material : GP Sheet

Size (mm)	Ref. No.
100x100x75mm	HE1020-75
100x100x100mm	HE1020-100
150x150x75mm	HE1021-75
150x150x100mm	HE1021-100
225x225x75mm	HE1022-75
225x225x100mm	HE1022-100
300x300x75mm	HE1023-75
300x300x100mm	HE1023-100

### PVC COATED GALVANISED FLEXIBLE CONDUITS

Standard : As per BS 731 part 1  
 Properties : Heat resistant self extinguishing PVC jacket  
 Colour : Black(Grey on request)  
 Operating Temperature : -15c to +80c



Construction : Helically wound, Galvanised steel core with enhanced low acid PVC covering  
 Features : Highly flexible & largely resistance to oil, acid and sea water  
 Packing : In spool

Cond.Size MM	Size I.D x O.D	Ref. No.
16	13 x 17	HE890-16
20	17 x 21	HE890-20
25	21 x 26	HE890-25
32	28 x 33	HE890-32
40	35 x 40	HE890-40
50	50 x 55	HE890-50

Material : G.P. Sheet  
 Properties : Protection for cable, compression and impact resistance  
 Temperature : 50 c to -350 c.

#### Range Features

Features : Excellent crush & pull of characteristic, making it ideal for flexing, bending and vibrating application.  
 Contraction : High flexible steel conduit offers good mechanical protection, helically coiled,  
 Finish : Pre Galvanised



### FLEXIBLE STEEL CONDUIT SYSTEM

Cond.Size MM	Size I.D x O.D	Ref. No.
12	12 x 17	HE891-12
16	16 x 20	HE891-16
19	19 x 22	HE891-19
25	25 x 29	HE891-25
32	32 x 36	HE891-32
35	38 x 42	HE891-35
50	50 x 55	HE891-50

### LIQUID TIGHT FLEXIBLE PVC COATED GALVANISED CONDUIT

Properties : Outstanding mechanical strength  
 Operating Temp. Range : -25 c to +105 c  
 Contraction : A Helically wound galvanised steel core with external PVC sheathing.

Colour : Black (Grey on Request)  
 Features : Idea for application where continual flexing and vibrations occur

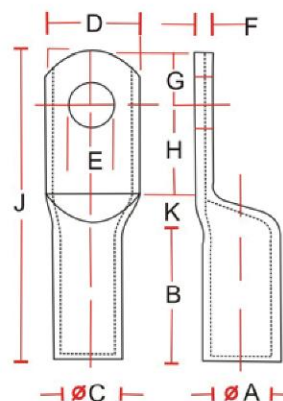


Cond.Size MM	Size I.D x O.D	Ref. No.
16	12.5 x 17.8	HE892-16
20	15.9 x 21.1	HE892-20
25	21 x 26.4	HE892-25
32	26.7 x 33.1	HE892-32
40	35.4 x 41.8	HE892-40



### CABLE LUGS

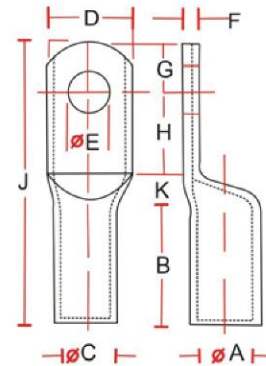
### COPPER TUBE TERMINALS LIGHT DUTY



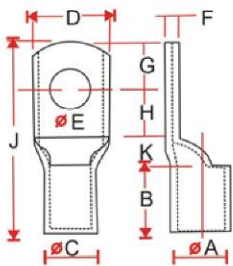
Size mm <sup>2</sup>	E	A	C	D	F	B	K	H	G	J	Ref. No.
2.5	M5	2.0	3.7	9	1.0	7	3	5	5	20	HE830-02
4.0	M6	3.1	4.8	11	1.0	7	3	6	6	22	HE830-04
6.0	M6	3.8	5.5	11	1.0	9	3	6	6	24	HE830-06
10	M6	4.4	6.2	11	1.3	9	3	6	6	24	HE830-10
16	M6	5.3	7.1	11	1.6	12	4	8	6	30	HE830-15
25	M6	7.0	9.0	13	2.0	12	5	12	8	37	HE830-25
35	M6	8.0	10.0	15	2.0	12	5	12	8	37	HE830-35
	M8	8.0	10.0	15	2.0	12	5	12	8	37	
50	M6	9.2	11.2	16	2.0	16	8	11	10	45	HE830-50
	M8	9.2	11.2	16	2.0	16	8	11	10	45	
	M10	9.2	11.2	16	2.0	16	8	11	10	45	
70	M8	11.6	13.8	20	2.2	18	10	15	13	56	
	M10	11.6	13.8	20	2.2	18	10	15	13	56	
	M12	11.6	13.8	30	2.2	18	10	15	13	56	HE830-70
95	M10	12.6	15.6	23	2.8	20	10	15	13	58	
	M12	12.8	15.6	23	2.8	20	10	15	13	58	HE830-95
120	M10	14.8	17.8	26	3.0	22	10	16	14	62	HE830-120
	M12	14.8	17.8	26	3.0	22	10	16	14	62	
	M16	14.8	17.8	26	3.0	22	10	16	14	62	
150	M10	16.0	19.6	28	3.6	26	11	18	15	70	HE830-150
	M12	16.0	19.6	28	3.6	26	11	18	15	70	
	M16	16.0	19.6	28	3.6	26	11	18	15	70	
185	M12	18.0	22.0	32	4.0	30	11	21	21	83	HE830-185
	M16	18.0	22.0	32	4.0	30	11	21	21	83	
225	M16	20.0	24.0	35	4.0	34	13	24	24	95	HE830-225
240	M16	22.0	26.0	38	4.0	36	13	24	24	97	HE830-240
	M20	22.0	26.0	38	4.0	36	13	24	24	97	
300	M16	24.0	28.7	42	4.7	39	13	26	25	103	HE830-300
	M20	24.0	28.7	42	4.7	39	13	26	25	103	
400	M20	28.0	33.2	49	5.2	44	18	27	27	116	HE830-400
500	M20	30.0	36.0	53	6.0	48	18	27	27	120	HE830-600
630	M20	35.0	41.5	61	6.5	55	18	33	31	137	HE830-830
800		39.0	46.3	67	7.3	65	25	38	37	165	HE830-800
1000		43.0	53.8	76	10.8	90	30	45	45	210	HE830-1000

### CABLE LUGS

#### COPPER TUBE TERMINALS HEAVY DUTY LONG BARREL



Size mm <sup>2</sup>	E	A	C	D	F	B	K	H	G	J	Ref. No.
25	M8	7.0	9.0	13	2.0	16	5	12	8	41	HE840-25
35	M8	8.0	10.6	15	2.6	20	5	14	9	48	HE840-35
50	M8	9.2	12.2	17	3.0	26	7	16	10	59	HE840-50
70	M10	11.5	15.0	20	3.5	28	7	19	12	66	HE840-70
95	M12	12.8	17.0	24	4.2	32	10	20	12	74	HE840-95
120	M12	14.8	19.6	28	4.8	35	10	23	14	82	HE840-120
150	M12	16.0	21.2	30	5.2	38	10	24	14	86	HE840-150
185	M12	18.0	24.0	34	6.0	43	12	23	17	95	HE840-185
240	M16	22.0	28.0	40	6.0	50	12	30	20	112	HE840-240
300	16.2	25.0	32.0	45	7.0	57	14	27	25	123	HE840-300
400	20.2	29.0	37.0	51	8.0	65	14	30	27	136	HE840-400



#### COPPER TUBE TERMINALS HEAVY DUTY

Size mm	E	A	C	D	F	B	K	H	G	J	Ref. No.
2.5	M4	2.4	4.0	8	1.0	7	2	5	4	18	HE850-02
4.0	M5	3.1	4.8	10	1.0	7	2	6	5	20	HE850-04
6.0	M5	3.8	5.5	10	1.2	9	3	6	5	23	HE850-06
10	M6	4.5	6.2	12	1.2	9	3	7	6	25	HE850-10
16	M6	5.4	7.1	12	1.4	12	4	7	7	30	HE850-16
25	M6	6.8	8.8	13	2.0	12	4	7	7	30	HE851-25
35	M8	8.2	10.6	15	2.4	12	5	9	9	35	HE851-35
50	M8	9.5	12.4	18	2.9	16	6	11	10	43	HE851-50
70	M10	11.2	14.7	21	3.5	18	7	13	12	50	HE851-70
95	M10	13.5	17.4	25	3.9	20	9	13	13	55	HE851-95
120	M12	15.0	19.4	28	4.4	22	10	14	14	60	HE851-120
150	M12	16.5	21.2	30	4.7	26	11	16	16	69	HE851-150
185	M16	18.5	23.5	34	5.0	32	12	17	17	78	HE851-185
240	M16	21.0	26.5	38	5.5	38	14	20	20	92	HE851-240
300	M16	23.5	30.0	43	6.5	42	15	22	22	101	HE851-300
400	M16	26.8	34.8	50	8.0	44	18	26	26	114	HE851-400
500	M20	30.0	39.0	56	9.0	48	20	28	28	124	HE851-500

As per BS 50086, BS 31- Where Applicable

### MALE BUSH - HEXAGONAL, HEAD (LONG TYPE)



Material : Brass  
Finish : Self

Size (mm)	Size (Inc.)	Ref. No.
20mm	3/4"	HE700-20
25mm	1"	HE700-25
32mm	1 1/4"	HE700-32
38mm	1 1/2"	HE700-38
50mm	2"	HE700-50

### MALE BUSH - HEXAGONAL, HEAD (SHORT TYPE)



Material : Brass  
Finish : Self

Size (mm)	Size (Inc.)	Ref. No.
20mm	3/4"	HE710-20
25mm	1"	HE710-25
32mm	1 1/4"	HE710-32
38mm	1 1/2"	HE710-38
50mm	2"	HE710-50

### FEMALE BUSH



Material : Brass  
Finish : Self

Size (mm)	Size (Inc.)	Ref. No.
20mm	3/4"	HE720-20
25mm	1"	HE720-25
32mm	1 1/4"	HE720-32
38mm	1 1/2"	HE720-38
50mm	2"	HE720-50

### BRASS FLEXIBLE ADOPTOR



Brass Flexible Conduit connector is designed in three piece to provide extra protection and used in Galvanized / PVC coated flexible conduit system. This connector fits into inside helix of the conduit and is used to connect the flexible conduit to the equipment, enclosure or other conduit system.

Finish : Brass Nickel / Chrome Plated

### BRASS ADOPTOR



Brass Flexible Conduit Adaptor (with screw) is used in Galvanized / PVC coated flexible conduit system. This adaptor fits over the outer helix of the conduit and the screw provides an extra locking and is used to connect the flexible conduit to the equipment, enclosure or other conduit system.

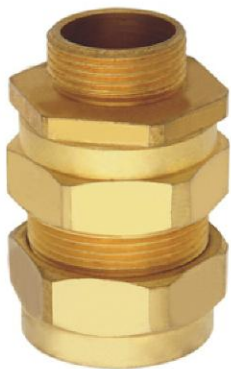
Finish : Brass

Conduit Size mm	Cat No.	Conduit Size mm	Cat No.
20mm	HE760-20	3/4"	HE760-34
25mm	HE760-25	1"	HE760-01
32mm	HE760-32	1.1/4"	HE760-114
40mm	HE760-40	1.1/2"	HE760-112
50mm	HE760-50	2"	HE760-02

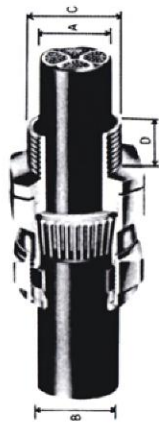
Conduit Size mm	Ref. No.	Conduit Size mm	Ref. No.
20mm	HE750-20	3/4"	HE750-34
25mm	HE750-25	1"	HE750-01
32mm	HE750-32	1.1/4"	HE750-114
40mm	HE750-40	1.1/2"	HE750-112
50mm	HE750-50	2"	HE750-02



### CABLE GLANDS 'CW' TYPE



Material : Brass  
Finish : Self

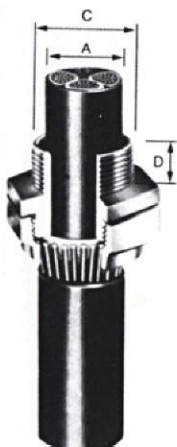


BW Gland Size	C Entry Thread Metric	D Min. Length Dia	A Cable dia A Max	B Cable dia B Max	E Across Corner E	Armoure Wire Dia
20 S	20	10	12.3	17.6	27.7	0.9/1.25
20 L	20	10	14.5	20.8	32.0	0.9/1.25
25 S	25	10	17.3	23.8	35.7	1.25/1.6
25 L	25	10	20.2	27.2	40.5	1.25/1.6
32 S	32	14	26.2	34.0	49.0	1.6/2.0
40 S	40	14	30.5	39.5	56.0	1.6/2.0
40 L	40	14	32.3	42.2	59.0	1.6/2.0
50 S	50	15	39.8	50.0	68.0	2.0/2.5
50 L	50	15	44.0	53.8	72.0	2.0/2.5
63 S	63	15	50.0	60.5	82.0	2.0/2.5
63 L	63	15	56.0	66.5	89.0	2.0/2.5
75 S	75	17	62.5	74.0	100.0	2.5/3.2
75 L	75	17	67.3	80.5	108.0	2.5/3.2
88 L	88	19	80.0	94	125.0	3.2

### CABLE GLANDS 'BW' TYPE



Material : Brass  
Finish : Self



Gland Size	C Entry Thread Metric	D Entry Thread Inch.	Across Flats	Across Corner	Cable Dia	
					Min.	Max.
20 S	20	3/4"	25.0	29.0	12.0	17.0
20 L	20	3/4"	30.0	35.0	16.0	20.8
25 S	25	1"	33.0	38.0	20.0	24.0
25 L	25	1"	36.0	41.5	23.0	27.0
32 L	32	1 1/4"	44.0	49.0	27.0	33.0
40 S	40	1 1/2"	49.0	54.0	33.0	37.0
40 L	40	1 1/2"	52.5	58.0	37.0	41.0
50 S	50	2"	62.0	68.0	42.0	48.0
50 L	50	2"	67.0	74.0	46.0	52.0
63 S	63	2 1/2"	74.0	82.0	52.5	59.0
63 L	63	2 1/2"	80.0	88.0	60.0	66.0
75 S	75	3"	88.0	97.0	66.5	72.0
75 L	75	3"	97.0	107.0	72.5	78.0
90 L	90	3 1/2"	112.0	124.0	84.0	90.0

Kit Available with gland, Locknut, Earth Tag & PVC Shroud

### A1/A2 INDUSTRIAL CABLE GLANDS

#### A1/A2 GLAND FOR UNARMoured CABLE

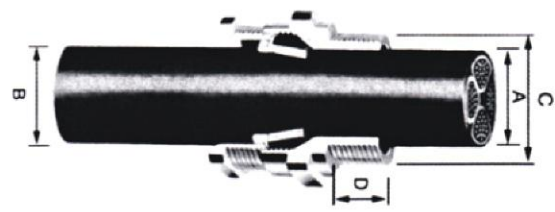
- To BS6121: Part 1
- Suitable for unarmoured, plastic or rubber sheathed cables
- Suitable for most indoor and outdoor applications
- Seal rated to IP66
- Finish : Natural Brass and also available in Electro Tinned and Nickle



#### A2 FLAME PROOF FOR UNARMoured CABLE

As above but with these additional benefits

- For use in hazardous environments
- Complies with BS 5501Pt 1 & Pt 6
- A2 F for flame proof increased safety applications
- Threads : Entry threads are metric to BS 3643 and are also available in Imperial(ET)
- Also available in Aluminium (BS 1474) cable glands



### ➔ APPLICATION

For use with all types of unarmoured and PVC cable. where it is essential to produce IP66 or explosion proof seal on inner sheath

Gland Size & Termination Thread Size "C"		Minimum Length Of Thread "D"	Cable Diameter		Across Flat	Across Corner	Ref. No.
Metric	IMP		Dia Inner Sheath Max "A"	Dia Outer Sheath Max "B"			
16L	5/8	15	8.7	3.5	19.0	22.0	HE1090A2 - 16L
20S	3/4	15	11.7	8.0	21.0	24.0	HE1090A2 - 20S
20L	3/4	15	14.0	11.0	24.0	25.0	HE1090A2 - 20L
25S	1	15	17.0	12.0	28.0	26.6	HE1090A2 - 25S
25L	1	15	20.0	13.0	30.0	31.5	HE1090A2 - 25L
32S	1 1/4	15	23.0	16.5	38.0	33.3	HE1090A2 - 32S
32L	1 1/4	15	26.3	19.0	41.0	41.0	HE1090A2 - 32L
40S	1 1/2	20	29.0	23.0	45.0	45.5	HE1090A2 - 40S
40L	1 1/2	20	33.0	25.0	46.0	50.0	HE1090A2 - 40L
50S	2	20	38.2	31.5	59.0	51.0	HE1090A2 - 50S
50L	2	20	46.0	36.5	64.0	65.0	HE1090A2 - 50L
63S	2 1/2	20	50.1	42.5	70.0	70.0	HE1090A2 - 63S
63L	2 1/2	20	56.0	44.5	75.0	77.0	HE1090A2 - 63L
75S	3	25	62.0	54.5	84.0	83.0	HE1090A2 - 75S
75L	3	25	68.0	60.5	84.0	93.0	HE1090A2 - 75L
88L	3 1/2	25	77.0	66.0	90.0	100.0	HE1090A2 - 88L
100	4	25	88.0	80.0	119.5	132.0	HE1090A2 - 100
110	4 1/2	25	95.0	89.0	143.0	128.5	HE1090A2 - 110

### BRASS EARTHING TAG



Material : Brass  
Finish : Self

Size	Ref. No.
16mm	HE770-16
20mm	HE770-20
25mm	HE770-25
32mm	HE770-32
40mm	HE770-40
50mm	HE770-50
63mm	HE770-63
75mm	HE770-75

### PVC SHROUD



The shroud are recommended to use with all cable glands to provide additional ingress protection and to minimize the risk of dirt or any foreign substance gathering around gland body.

PVC Shroud are denoted by gland reference number and are compatible with each glands size.

Gland Size	Ref. No. BW	Ref. No. CW	Ref No. A1A2
20 S/L	HE780-20SL	HE781-CW20SL	HE782A2-20SL
25 S/L	HE780-25SL	HE781-CW25SL	HE782A2-25SL
32 S/L	HE780-32SL	HE781-CW32SL	HE782A2-32SL
40 S/L	HE780-40SL	HE781-CW40SL	HE782A2-40SL
50 S/L	HE780-50SL	HE781-CW50SL	HE782A2-50SL
63 S/L	HE780-63SL	HE781-CW63SL	HE782A2-63SL
75 S/L	HE780-75SL	HE781-CW75SL	HE782A2-75SL
90 S/L	HE780-90SL	HE781-CW90SL	HE782A2-90SL

### BRASS REDUCER



Material : Brass

Size (mm)	Ref. No.
16mm x 20mm	HE730-16
16mm x 25mm	HE731-16
16mm x 32mm	HE732-16
16mm x 38mm	HE733-16
16mm x 50mm	HE734-16
20mm x 25mm	HE730-20
20mm x 32mm	HE735-20
20mm x 38mm	HE736-20
20mm x 50mm	HE737-20
25mm x 32mm	HE730-25
25mm x 38mm	HE738-25
25mm x 50mm	HE739-25
32mm x 38mm	HE730-32
32mm x 50mm	HE740-32
38mm x 50mm	HE730-38



### EARTHING EQUIPMENTS & FITTINGS



**LIGHTNING ARRESTOR**



**CROSS SADDLE**



**TEST BOND  
BRASS/ALUMINIUM**



**COUPLER COUPLING**



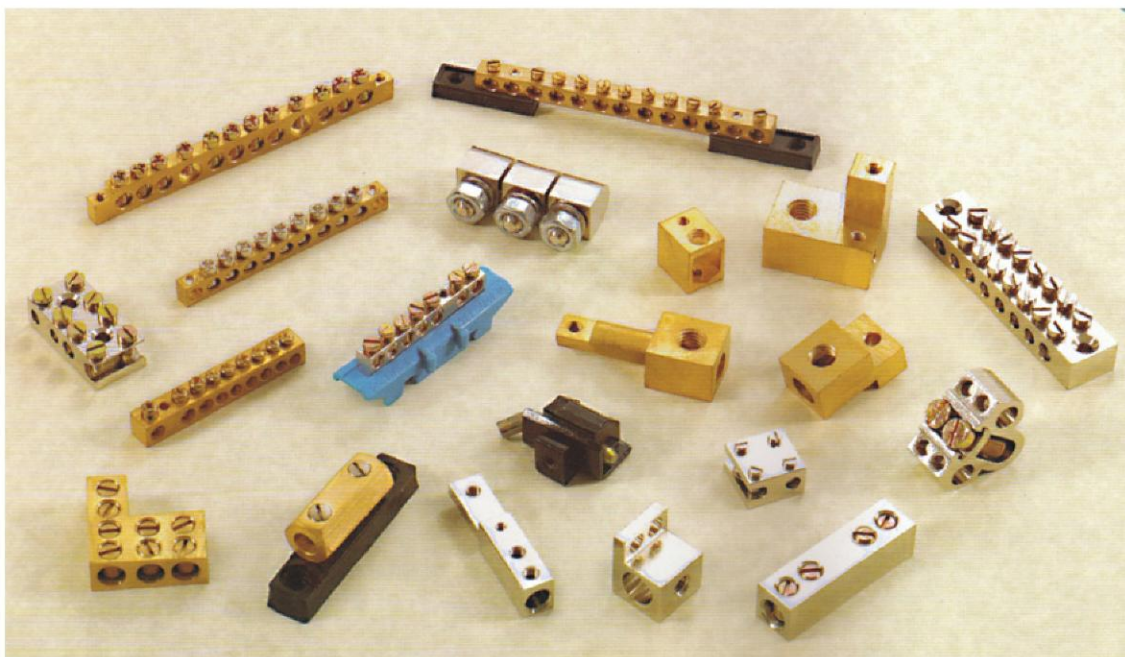
**SADDLE BAR**



**CLAMP**



**DC TAPE CLIP**



- Brass Neutral Link/Earth Bar/Terminal.
- Fuse Base Bar.
- Terminal Block.

Suitable to BS 50086/ BS 31- Where Applicable

### COPPER BONDED EARTH ROD



Manufactured from high tensile low carbon steel by molecularly bonding 99.9% pure electrolytic copper, these earth rods confirm to BS 4340 grade 43A. Each rod is treated with benzol triazole derivatives to prevent oxidation of copper bonding. The threads are formed by roll threading process which ensure strength and maintain the molecularly bonded copper along the full length of the threads. The rods can be deep driven manually or by using power hammer.

Rod Dia mm	Total Length	Thread Dia	Ref. No.
09.5	1200	unthreaded	HE2000-912
12.7	1200	9/16"	HE2000-1412
12.7	1500	9/16"	HE2000-1415
12.7	1800	9/16"	HE2000-1418
12.7	2400	9/16"	HE2000-1424
12.7	3000	9/16"	HE2000-1430
14.2	1200	5/8"	HE2000-1612
14.2	1500	5/8"	HE2000-1615
14.2	1800	5/8"	HE2000-1618
14.2	2400	5/8"	HE2000-1624
14.2	3000	5/8"	HE2000-1630
17.2	1200	3/4"	HE2000-2012
17.2	1500	3/4"	HE2000-2015
17.2	1800	3/4"	HE2000-2018
17.2	2400	3/4"	HE2000-2024
17.2	3000	3/4"	HE2000-2030
25.0	2400	unthreaded	HE2000-2524
25.0	3000	unthreaded	HE2000-2530

### COUPLING



Made of high grade Brass / Silicon Bronze/ Aluminium Bronze for higher strength with counted bore for protecting the rod threads from damage.

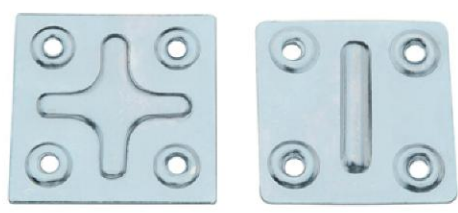
Thread Dia	Ref. No.
9/16"	HE2010-16
5/8"	HE2010-58
3/4"	HE2010-34

### HE1000B - BONDING JUMPER



MM2	Hole Centre to Hole Centre	Braid Dim. MM	Hole Size MM
4	110MM	6 x 1.5	6

### SQUARE PATTI



Material : Mild Steel  
Finish : Electro Galvanised

Size(mm)	Ref. No.
40mm x 40mm	HE3000
40mm x 50mm	HE3001
50mm x 50mm	HE3002

### L-PATII



Material : Mild Steel  
Finish : Electro Galvanised

Size(mm)	Ref. No.
19mm x 40mm	HE3010
19mm x 50mm	HE3011

### ROUND KAN



Material : Mild Steel  
Finish : Electro Galvanised

Size(Inch)	Ref. No.
3/4"	HE3020
1"	HE3021
1 1/4"	HE3022
1 1/2"	HE3023
2"	HE3024

### CHAIR CORNER



Material : Mild Steel  
Finish : Electro Galvanised

Size(Inch)	Ref. No.
3/4" x 3/4"	HE3030
1" x 1"	HE3031
1 1/4" x 1 1/4"	HE3032
1 1/2" x 1 1/2"	HE3033
2" x 2"	HE3034
2 1/2" x 2 1/2"	HE3035
3" x 3"	HE3036
4" x 4"	HE3037

### MARBLE ANGLE



Material:- Stainless Steel

Size(mm)	Ref. No.
20mm x 20mm	HE5040
30mm x 30mm	HE5041
30mm x 40mm	HE5042
30mm x 50mm	HE5043
30mm x 60mm	HE5044
30mm x 70mm	HE5045
30mm x 80mm	HE5046
30mm x 90mm	HE5047
30mm x 100mm	HE5048
30mm x 120mm	HE5049
30mm x 150mm	HE5050

### L - BRACKET



Size(mm)	Ref. No.
40mm x 40mm	HE3040

Material : Mild Steel  
Finish : Electro Galvanised

### LOCK PATTI



Ref. No.
HE3045

Material : Mild Steel  
Finish : Electro Galvanised



### CONDUIT HANGER



Material : Mild Steel  
Finish : Galvanised

Size(Inch)	Ref. No.
1/2"	HE3050
3/4"	HE3051
1 1/4"	HE3052
1 1/2"	HE3053
2"	HE3054

### LOCK NUT



Material : Mild Steel  
Finish : Galvanised

Size(Inch)	Ref. No.
1/2"	HE3060
3/4"	HE3061
1"	HE3062
1 1/4"	HE3063
1 1/2"	HE3064
2"	HE3065
2 1/2"	HE3066
3"	HE3067
4"	HE3068

### EMT STRAP (TWO HOLE)



Material : Mild Steel  
Finish : Galvanised

Size(Inch)	Ref. No.
1/2"	HE3070
3/4"	HE3071
1"	HE3072
1 1/4"	HE3073
1 1/2"	HE3074
2"	HE3075
2 1/2"	HE3076
3"	HE3077
3 1/2"	HE3078
4"	HE3079

### RIGID STRAP



Material : Cast Iron, Malleable Iron  
Finish : Galvanised

Size(Inch)	Ref. No.
1/2"	HE3080
3/4"	HE3081
1"	HE3082
1 1/4"	HE3083
1 1/2"	HE3084
2"	HE3085
2 1/2"	HE3086
3"	HE3087
3 1/2"	HE3088
4"	HE3089
5"	HE3090
6"	HE3091

### CLAMP BACK



Material : Cast Iron, Malleable Iron  
Finish : Galvanised

Size(Inch)	Ref. No.
1/2"	HE4000
3/4"	HE4001
1"	HE4002
1 1/4"	HE4003
1 1/2"	HE4004
2"	HE4005
2 1/2"	HE4006
3"	HE4007
3 1/2"	HE4008
4"	HE4009
5"	HE4010

### CONDUIT BODY TYPE T



Material : Cast Iron, Malleable Iron  
 Finish : Galvanised

Size(Inch)	Ref. No.
1/2"	HE4020
3/4"	HE4021
1"	HE4022
1-1/4"	HE4023
1-1/2"	HE4024
2"	HE4025

### CONDUIT BODY TYPE C



Material : Cast Iron, Malleable Iron  
 Finish : Galvanised

Size(Inch)	Ref. No.
1/2"	HE4030
3/4"	HE4031
1"	HE4032
1-1/4"	HE4033
1-1/2"	HE4034
2"	HE4035

### CONDUIT BODY TYPE LL



Material : Cast Iron, Malleable Iron  
 Finish : Galvanised

Size(Inch)	Ref. No.
1/2"	HE4040
3/4"	HE4041
1"	HE4042
1-1/4"	HE4043
1-1/2"	HE4044
2"	HE4045

### CONDUIT BODY TYPE LR



Material : Cast Iron, Malleable Iron  
 Finish : Galvanised

Size(Inch)	Ref. No.
1/2"	HE4050
3/4"	HE4051
1"	HE4052
1-1/4"	HE4053
1-1/2"	HE4054
2"	HE4055

### CONDUIT OUTLET BOX GUA



**Type:**  
 GUA  
 GUAC  
 GUAT  
 GUAX  
 GUAL  
 GUAN

Material : Cast Iron, Malleable Iron  
 Finish : Galvanised

Size(Inch)	Ref. No.
1/2"	HE4060
3/4"	HE4061
1"	HE4062
1-1/4"	HE4063
1-1/2"	HE4064
2"	HE4065

### SET SCREW COUPLING



Material : Cast Iron, Malleable Iron  
 Finish : Galvanised

Size(Inch)	Ref. No.
1/2"	HE4070
3/4"	HE4071
1"	HE4072
1-1/4"	HE4073
1-1/2"	HE4074
2"	HE4075
2-1/2"	HE4076
3"	HE4077
3-1/2"	HE4078
4"	HE4079
5"	HE4080
6"	HE4081

### EMT CONNECTOR



Material : Zinc Diecast  
 Finish : Self

Size(Inch)	Ref. No.
1/2"	HE4090
3/4"	HE4091
1"	HE4092
1-1/4"	HE4093
1-1/2"	HE4094
2"	HE4095

### EMT COUPLING



Material : Zinc Diecast  
 Finish : Self

Size(Inch)	Ref. No.
1/2"	HE5000
3/4"	HE5001
1"	HE5002
1-1/4"	HE5003
1-1/2"	HE5004
2"	HE5005

### SET SCREW CONNECTOR



Material : Cast Iron, Malleable Iron  
 Finish : Galvanised

Size(Inch)	Ref. No.
1/2"	HE5010
3/4"	HE5011
1"	HE5012
1-1/4"	HE5013
1-1/2"	HE5014
2"	HE5015
2-1/2"	HE5016
3"	HE5017
3-1/2"	HE5018
4"	HE5019
5"	HE5020
6"	HE5021

### THREE HOLE CLAMP



Material : Galvanised Steel

Size(Inch)	Ref. No.
4"	HE5030
6"	HE5031



### TOP CUP



Material : S.G. Iron, Malleable Iron  
Finish : Electro Plated, Self Finish

### JACKNUT



Material : S.G. Iron, Malleable Iron  
Finish : Electro Plated, Self Finish

### PROP NUT



Material : S.G. Iron, Malleable Iron  
Finish : Electro Plated, Self Finish

### WING NUT



Material : S.G. Iron, Malleable Iron  
Finish : Electro Plated, Self Finish

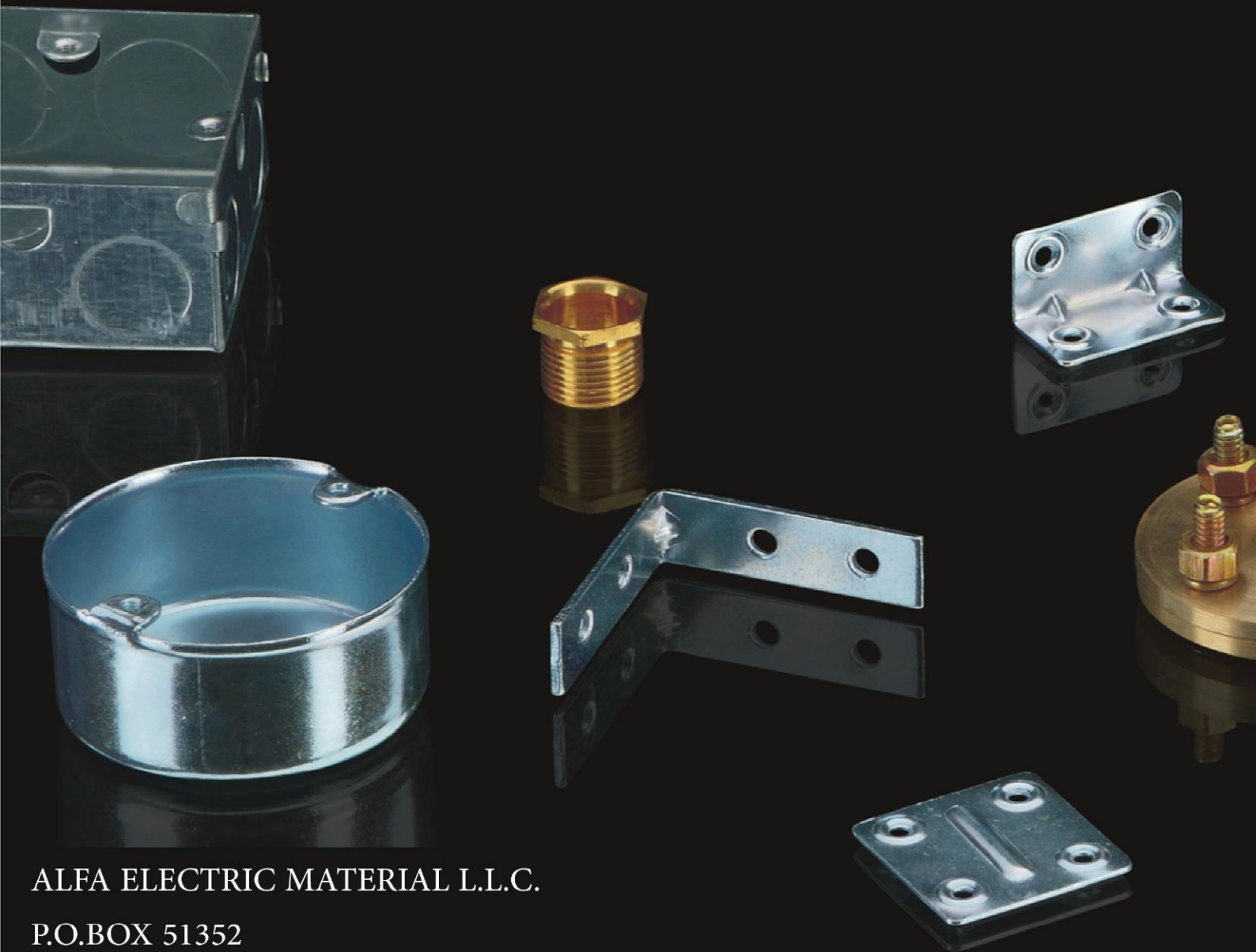
### WATER STOPPER



Material : S.G. Iron, Malleable Iron  
Finish : Electro Plated, Self Finish



Electrical Wiring & Conduit Fittings  
[www.alfalec.ae](http://www.alfalec.ae)



ALFA ELECTRIC MATERIAL L.L.C.

P.O.BOX 51352

DUBAI, U.A.E.

Email: [vishal@alfalec.ae](mailto:vishal@alfalec.ae), [alfalec@eim.ae](mailto:alfalec@eim.ae)

Al-Quoz Office	Deira Head Office	Deira Showroom	Sharjah Showroom
Tel: +971-4-3470155	Tel: +971-4-2270741	Tel: +971-4-2270860	Tel: +971-6-5210976